

CHALLENGER

**SCOTCH YOKE
ACTUATOR
FOR LARGE Dia 375 -1000 mm**

MODEL: ETC

**HEAVY DUTY SCOTCH YOKE DESIGN
ON/OFF or MODULATING CONTROL**

SPECIFICALLY DESIGNED TO SUIT THE
CHALLENGER RANGE OF BUTTERFLY VALVES

PNEUMATIC SUPPLY
CORROSION PROOF CYLINDER
SAFE PISTON GUIDE BARS



FEATURES:-

- DUCTILE IRON BODY
- WEATHERPROOF ENCLOSURE
- TORQUES: 495Nm ~ 75000Nm
- SUPPLY: AIR
- SUPPLY PRESSURE: 2.8 ~ 7 BAR
- TEMPERATURE: - 20 °C 80°C Standard
- ISO5211 INTERFACE

OPTIONS:

- LIMIT SWITCHES
- PROXIMITY SWITCHES
- POSITIONERS
- SOLENOIDS
- FILTER & REGULATOR
- VOLUME TANK
- HIGH TEMP SEALS -30°C + 177°C

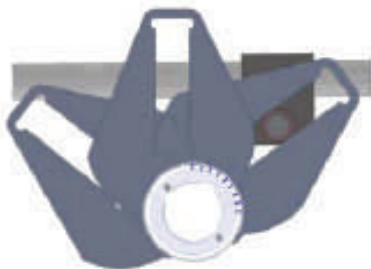


ACTUATOR MODEL DOUBLE ACTING @ 5.60 BAR AIR SUPPLY

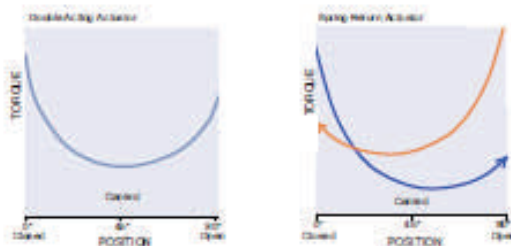
VALVE	375	400	450	500	600	700	750	800	900	1000
16 BAR	85DA200	85DA200	85DA200	85DA200	85DA250	85DA300	85DA300	85DA300	85DA335	130DA435

ACTUATOR MODEL SINGLE ACTING @ 5.60 BAR AIR SUPPLY

VALVE	375	400	450	500	600	700	750	800	900	1000
16 BAR	85SR250	85SR250	85SR300	85SR335	100SR385	100SR435	100SR435	130SR435	130SR485	200SR635



Canted Yoke



Torque Curve

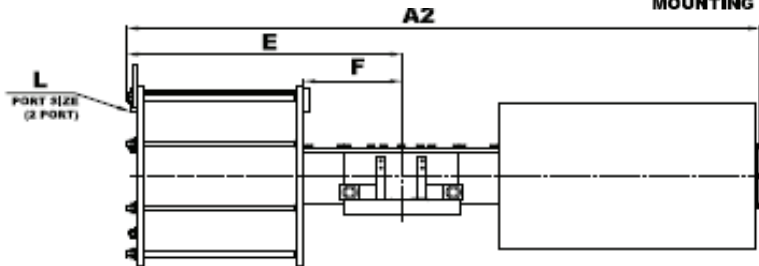
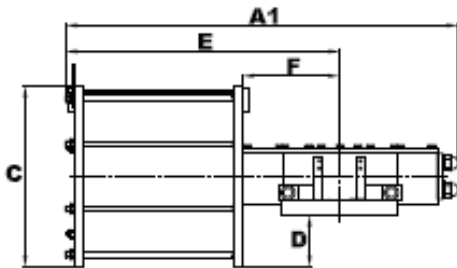
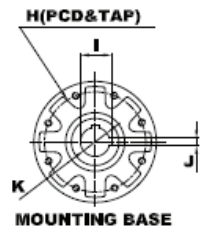
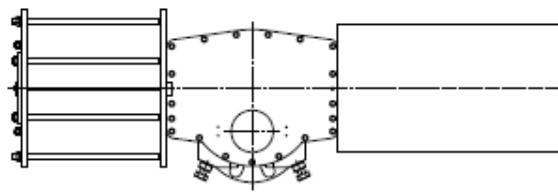
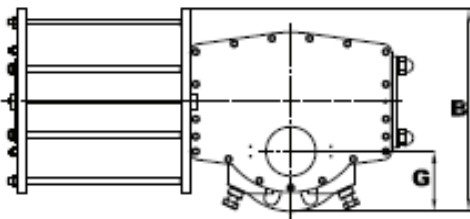


CHALLENGER
valves and actuators

CHALLENGER

**ETC SCOTCH YOKE
ACTUATOR DIMENSIONS**

MODEL: ETC



DOUBLE ACTING

SINGLE ACTING

ACTUATOR DIMENSIONS ETC SERIES HEAVY DUTY ACTUATOR

MODEL	A1	A2 5.6 bar	B	C	D	E	F	G	H PCD	H TAP	I	J	L	KG
ETC85DA200	822	1337	334	271	61	552	181	113	165	M20	54	14	1/2"NPT	116
ETC85DA250	822	1337	359	322	86	552	181	113	165	M20	54	14	1/2"NPT	137
ETC85DA300	822	1337	385	373	112	552	181	113	165	M20	54	14	1/2"NPT	158
ETC85DA335	822	1340	413	410	130	552	181	113	165	M20	54	14	1/2"NPT	179
ETC130DA435	1192	1904	566	512	144	799	269	180	298	M20	95.4	22	3/4"NPT	452
ETC85SR250	822	1337	359	322	86	552	181	113	165	M20	54	14	1/2"NPT	242
ETC85SR300	822	1337	385	373	112	552	181	113	165	M20	54	14	1/2"NPT	284
ETC85SR335	822	1340	413	410	130	552	181	113	165	M20	54	14	1/2"NPT	326
ETC100SR385	966	1546	481	461	131	643	219	150	254	M16	80	20	1/2"NPT	536
ETC100SR435	966	1546	506	512	156	643	219	150	254	M16	80	20	1/2"NPT	599
ETC130SR435	1192	1904	566	512	144	799	269	180	298	M20	95.4	22	3/4"NPT	840
ETC130SR485	1192	1907	591	562	169	799	269	180	298	M20	95.4	22	3/4"NPT	1019
ETC200SR635	1699	2760	810	739	211	1146	395	240	406	M36	137.40	32	3/4"NPT	2321