

# CHALLENGER

# KNIFEGATE CYLINDERS ESD FAIL SAFE SYSTEM

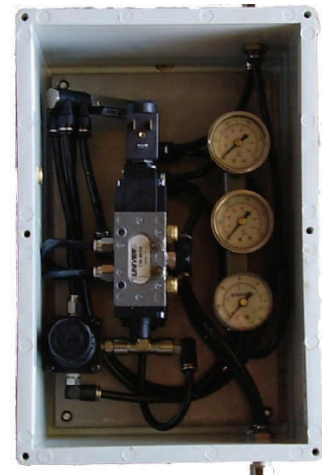
# MODEL ESDKGCL



AIR ACCUMULATOR

## Features

- Design to work with double acting cylinder
- Multiple failure strokes possible
- Multiple valve hook up
- Failsafe on loss of air or electrical supply
- Adjustable failure set point
- Weather proof enclosure
- Air reservoir to AS1210
- 240VAC Control standard



## Operation

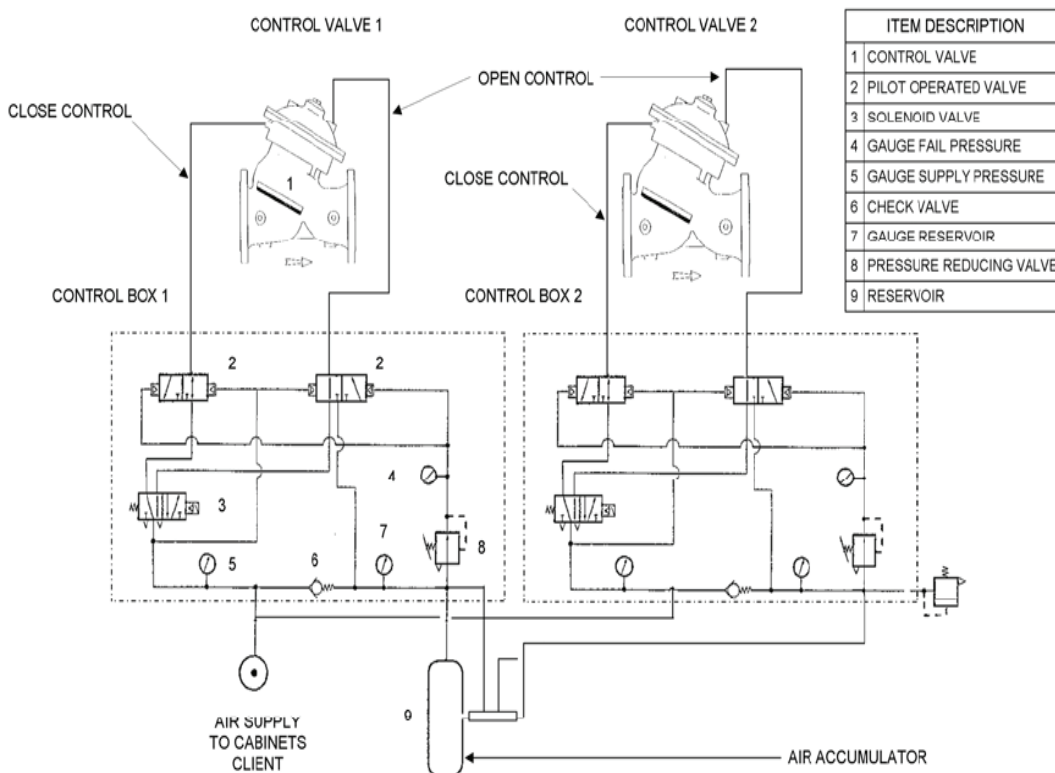
When the supply pressure falls below the fail pressure the air stored in the reservoir seats check valve (6)

As the failure pressure is now greater than supply air pressure it energizes the pilot operated valves (2) allowing the full reservoir pressure to retract the actuator.

Spring return solenoid valves are used in the system to allow fail safe action on loss of electrical supply.



## CONTROL BOX AIR



FAILSAFE SYSTEM ~ GENERAL APPLICATION